



MARKETS NEVER SLEEP®

# ADAPTIVE DIVERGENCE CONVERGENCE SIGNALS for MT4

## Set up & Configuration Guide



## CONTENT

Description	1	Indicator's use and set up	4
Subscribing to TRADING CENTRAL feed	1	Features and parameters	5
Installation process	1	Upgrade process	5



## DESCRIPTION

**TC.AdaptiveDivergenceConvergence is an easy to install, multilingual customizable Indicator designed to help traders make profitable decisions 24/5!**

Inspired by MACD, ADAPTIVE DIVERGENCE CONVERGENCE (ADC) adapts its effective lengths to changing market conditions (shorter in trending markets, longer in sideways) and becomes more practical for short-term trading by avoiding excessive signals and guarding against sideways markets. In addition to ADC's equivalent of MACD's indicators, two consistent oscillators (one slow, one fast) are also harvested from the analysis to help support trading decisions. Whilst its various lines all derive from the same window of market data, they do have some independence from each other. This allows decisions to be made on the basis of weight of evidence. ADC is particularly easy to optimize since it has only one parameter, and of the same reason almost impossible to overfit.

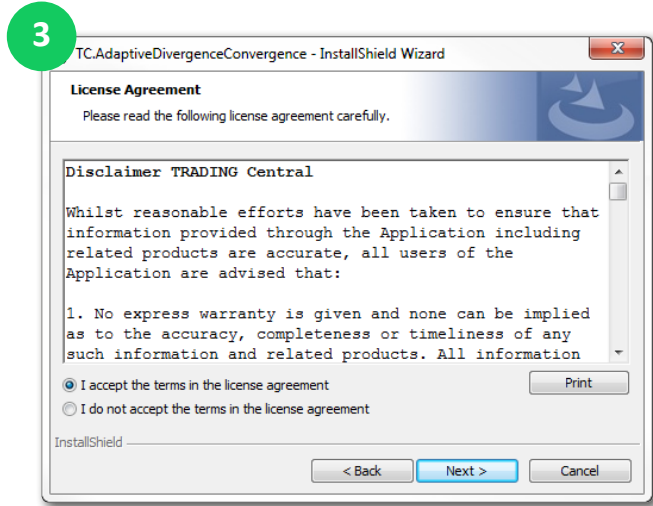
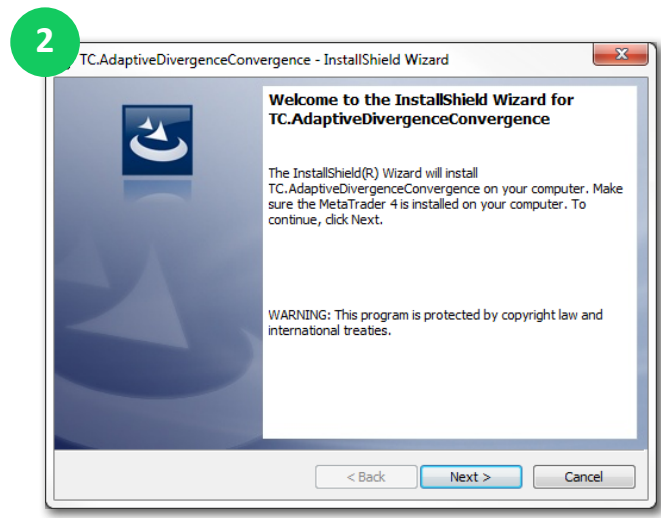
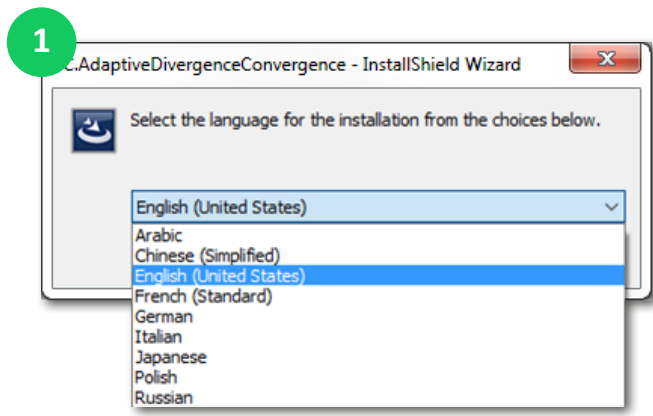
## SUBSCRIBING TO THE TRADING CENTRAL LIVE FEED

The TRADING CENTRAL Indicator automatically delivers live data to licensed broker. If the Indicator does not work on your MT4, your broker is probably not licensed by TRADING CENTRAL.

## INSTALLATION PROCESS

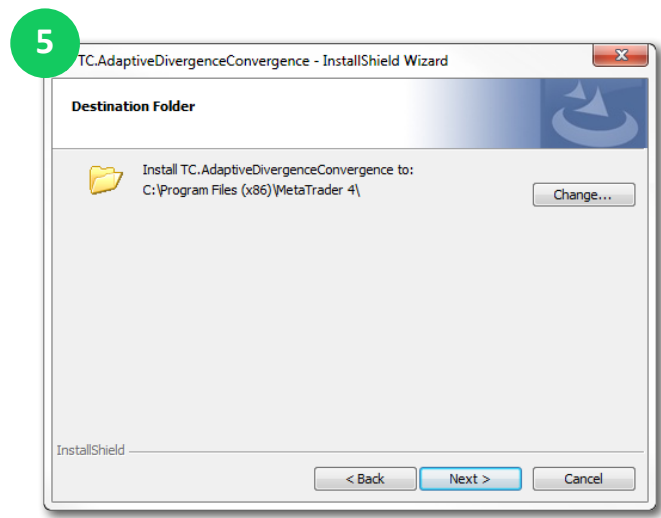
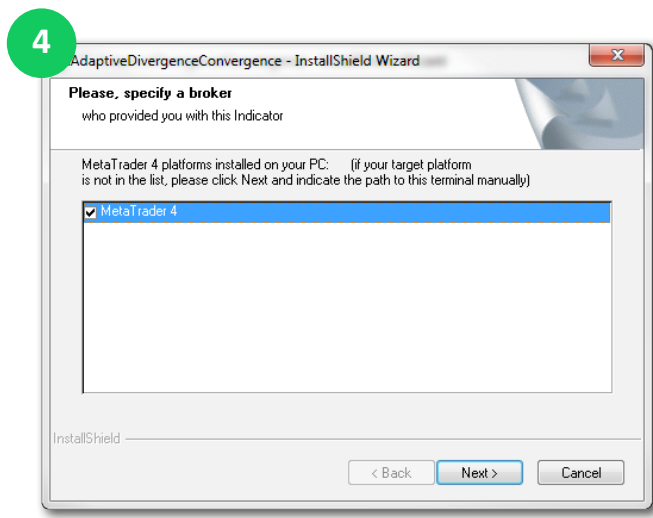
The latest version of our Indicator can be downloaded from: [https://feed.tradingcentral.com/ws\\_indicators.aspx/DownloadInstaller?application=2&platform=1](https://feed.tradingcentral.com/ws_indicators.aspx/DownloadInstaller?application=2&platform=1) You need just to follow some simple steps proposed by the installer:

# INSTALLATION PROCESS

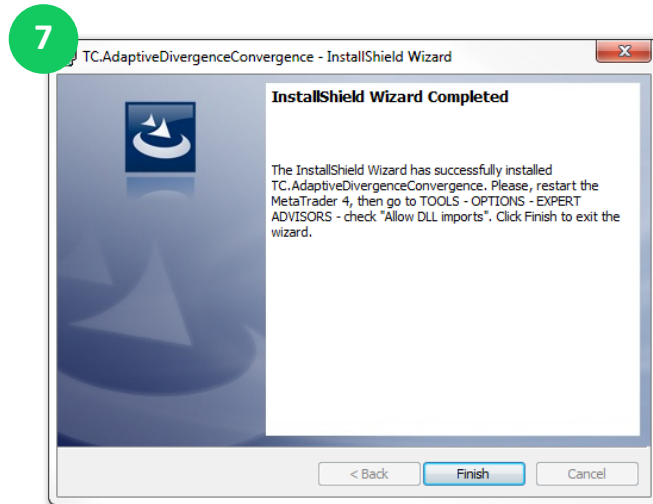
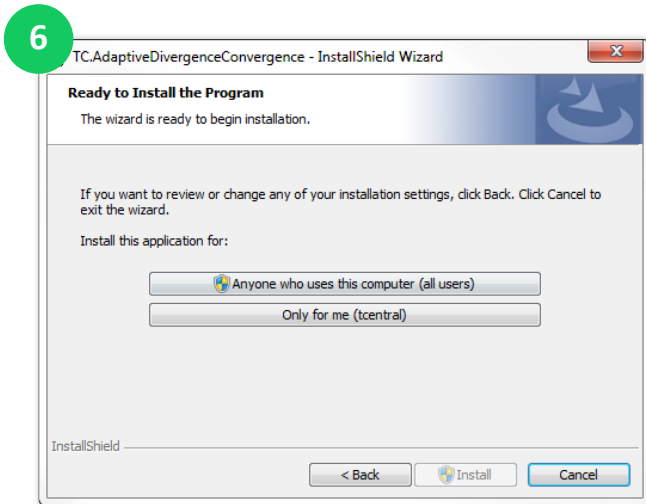


## Caution

If you have several MetaTrader platforms installed, you need to choose the platform corresponding to the broker, who provided you with this Indicator. If you can't find your platform (4), please indicate the proper path to the MetaTrader folder you use (5).



# INSTALLATION PROCESS

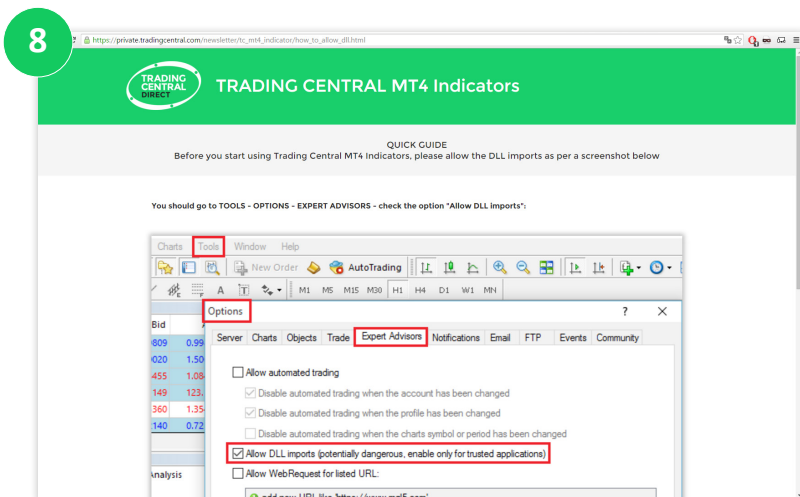


Now restart your MetaTrader.

## Enable DLL

Once the installation is completed, there is an automatic page opened in the browser (8), showing how to activate DLL imports options once for all indicators. If you accidentally closed this window, please follow the link :

[https://private.tradingcentral.com/newsletter/tc\\_mt4\\_indicator/how\\_to\\_allow\\_dll.html](https://private.tradingcentral.com/newsletter/tc_mt4_indicator/how_to_allow_dll.html)

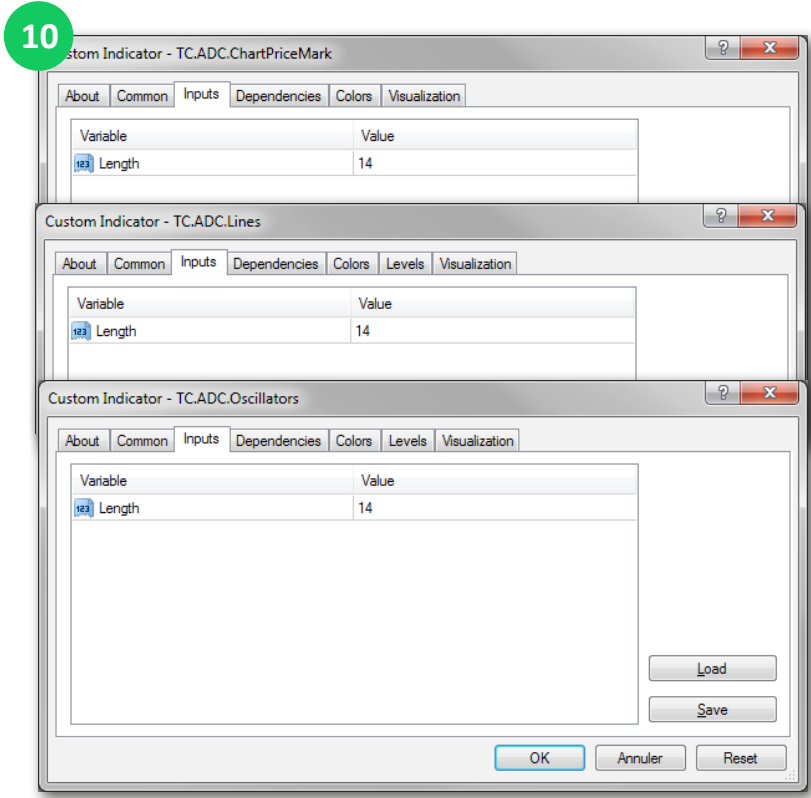
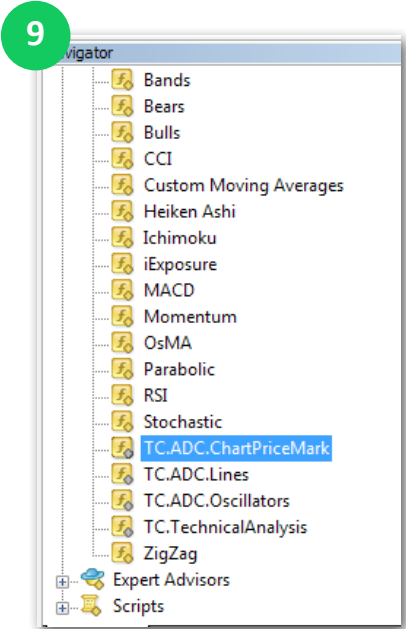


# INDICATOR'S USE AND SET UP

Go to Navigator > Indicators and look for TC.ADC.ChartPriceMark, TC.ADC.Lines or TC.ADC.Oscillators  
Drag and drop the wanted Indicator to a chart (9).

In the window that appeared when your drag and drop the Indicator to a chart select the Inputs tab (10). For these indicators you can change the period (see features and parameters).

ADC produces two MACD type price lines and indicators as well as two matched oscillators. All are based on the same length parameter. ADC is adaptive in the sense that the effective length of its faster price line shortens in trends and lengthens in sideways markets. This defends against unwanted sideways-market crossovers with its slower price line.



## FEATURES AND PARAMETERS

Features	Default settings	Customizable (parameter name)
ADC ChartPriceMark Period	Length:14	✓ (Length) Integer data, different lengths imply different levels of smoothing and delay.
ADC Lines Period	Length:14	✓ (Length) Integer data, different lengths imply different levels of smoothing and delay.
ADC Oscillators Period	Length:14	✓ (Length) Integer data, different lengths imply different levels of smoothing and delay.

## UPGRADE PROCESS

When a new version of the Indicator is available, a user gets a notification inside their MetaTrader and the loading starts automatically after clicking the OK button.

The previous version is no longer valid.

