



MARKETS NEVER SLEEP®

ADAPTIVE CANDLESTICKS for MT4

Set up & Configuration Guide



CONTENT

Description	1	Indicator's use and set up	4
Subscribing to TRADING CENTRAL feed	1	Features and parameters	5
Installation process	1	Upgrade process	5



DESCRIPTION

TC.AdaptiveCandlesticks is an easy to install, multilingual customizable Indicator designed to help traders make profitable decisions 24/5!

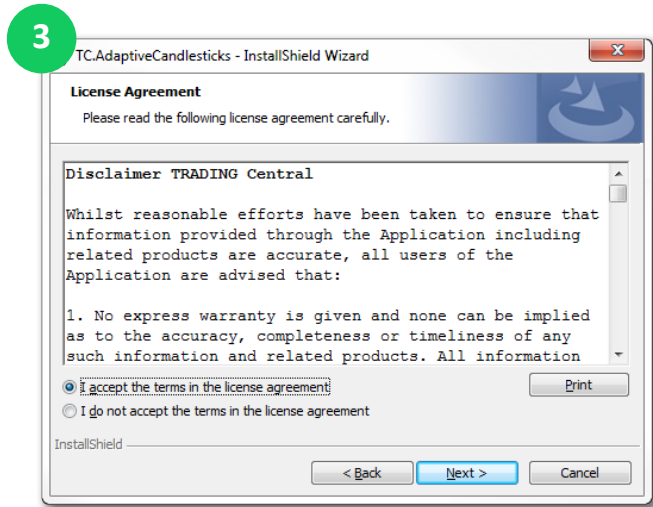
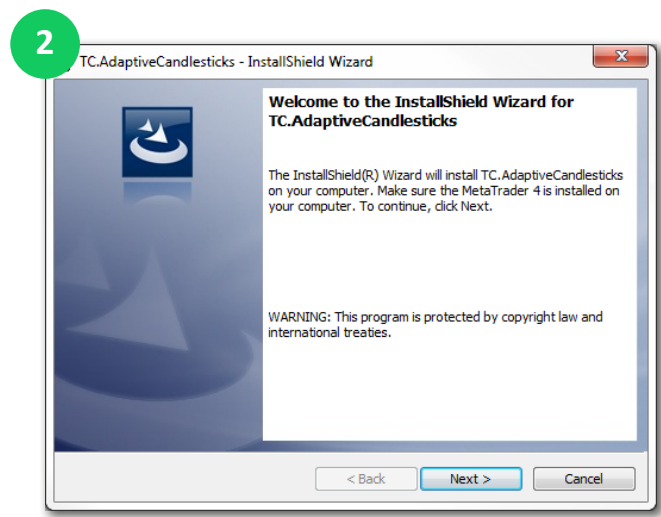
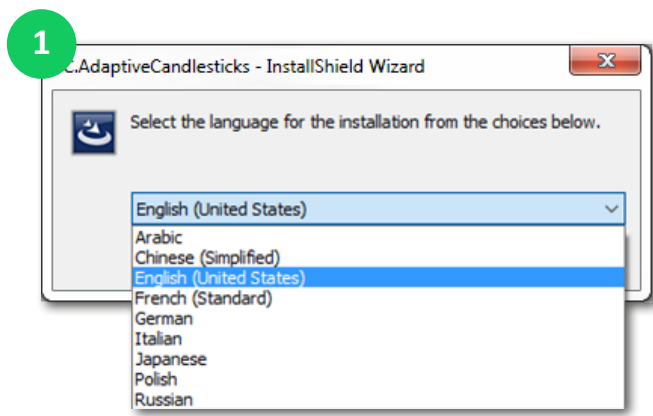
Candlestick charts illustrate changes in the underlying supply/demand lines or the constant fight between buyers and sellers. The interpretation of candlestick charts is based primarily on patterns. There are dozens of candlesticks patterns and mastering them all can be a daunting task. We have done this hard work and selected 16 patterns we think best represent market psychology or emotion, and have combined them with our unique quantitative and technical expertise. TRADING CENTRAL Adaptive Candlesticks (TCAC) will mark any MT4 chart with valid open-high-low-close prices with patterns we believe are the most appropriate for decision making while removing patterns less relevant in the context of what occurred before in the market and technical analysis. TCAC will recognize for you in real time reversal and continuation candlesticks patterns to enhance your trading skills and timing. You can use TCAC to better enter and exit the market while also managing your risk more appropriately. Best of all, this approach can be used on any time frame, from one minute bar to monthly or more bar. Although TCAC does not provide price targets it provides useful timing signals and can be combined with our ANALYST OPINION INDICATOR.

SUBSCRIBING TO THE TRADING CENTRAL LIVE FEED

The TRADING CENTRAL Indicator automatically delivers live data to licensed broker. If the Indicator does not work on your MT4, your broker is probably not licensed by TRADING CENTRAL. In this case please contact your broker and request a license.

INSTALLATION PROCESS

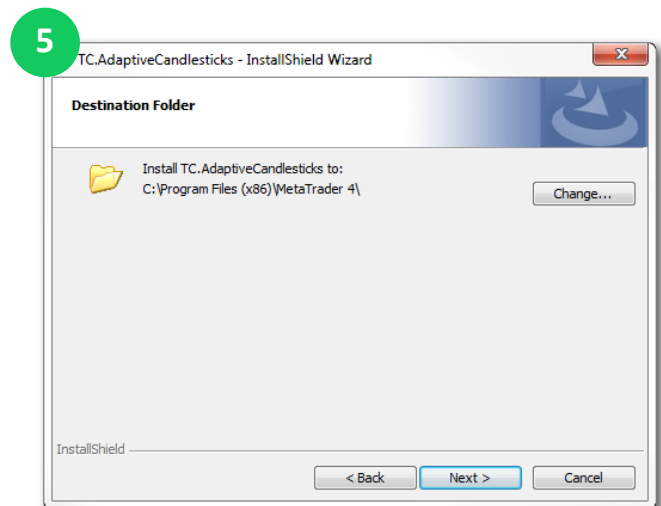
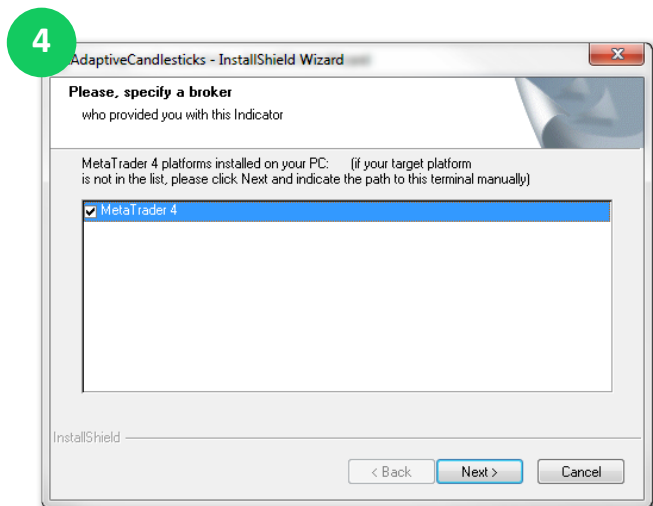
The latest version of our Indicator can be downloaded from: https://feed.tradingcentral.com/ws_indicators.aspx/DownloadInstaller?application=9&platform=1
You need just to follow some simple steps proposed by the installer:



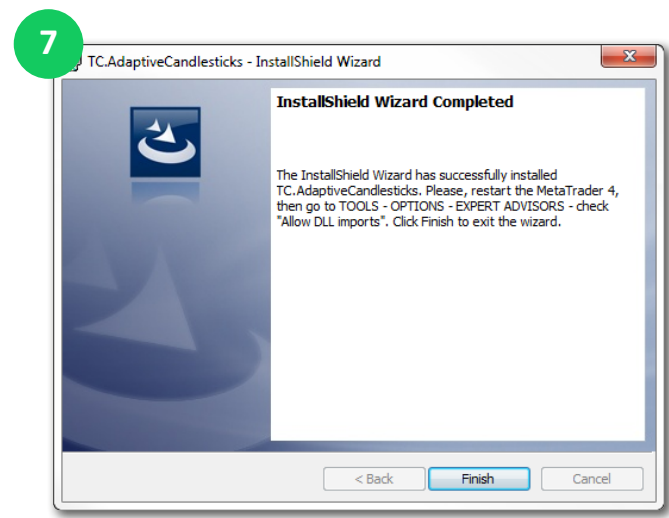
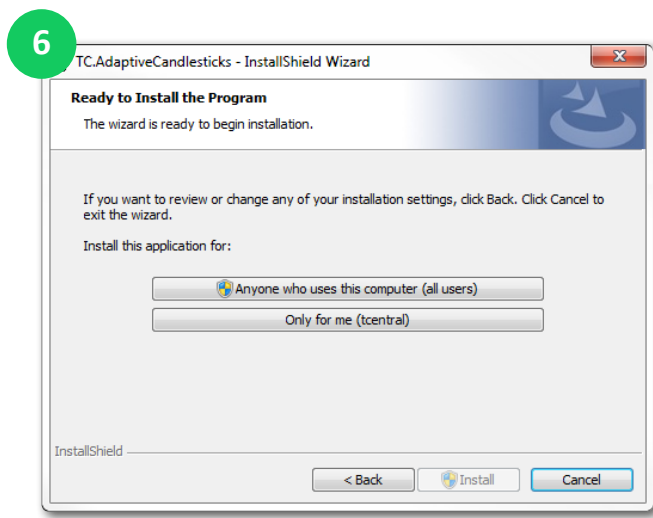
Caution

If you have several MetaTrader platforms installed, you need to choose the platform corresponding to the broker, who provided you with this Indicator.

If you can't find your platform (4), please indicate the proper path to the MetaTrader folder you use (5).



INSTALLATION PROCESS

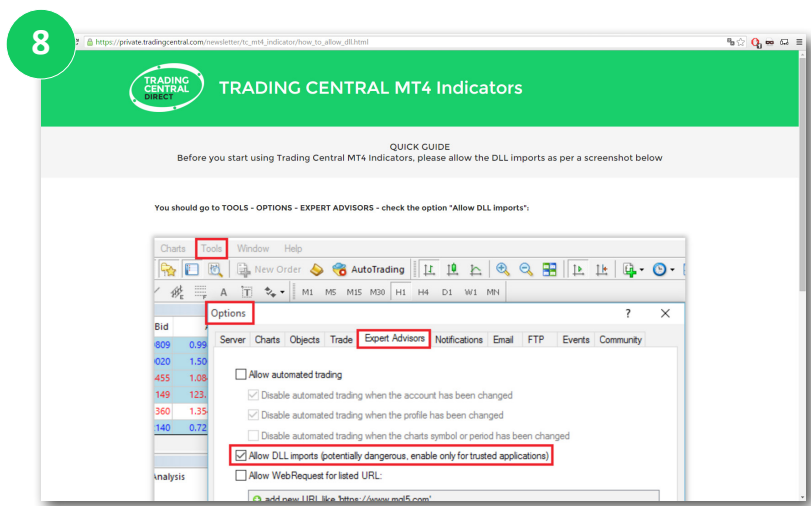


Now restart your MetaTrader.

Enable DLL

Once the installation is completed, there is an automatic page opened in the browser (8), showing how to activate DLL imports options once for all indicators. If you accidentally closed this window, please follow the link :

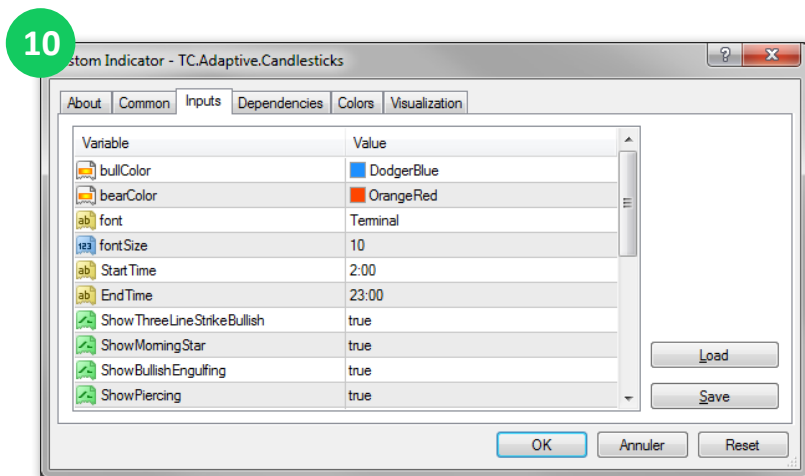
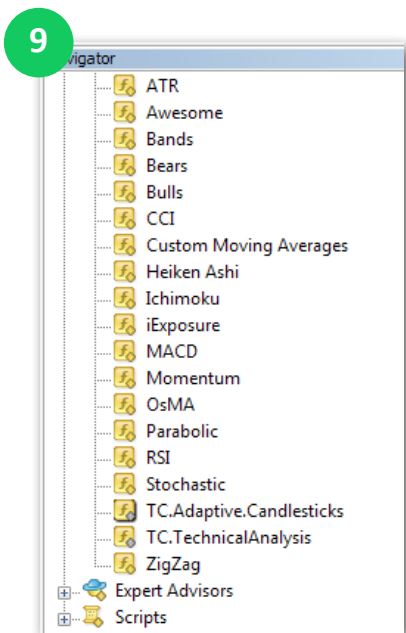
https://private.tradingcentral.com/newsletter/tc_mt4_indicator/how_to_allow_dll.html



INDICATOR'S USE AND SET UP

Go to Navigator > Custom Indicators and look for TC.AdaptiveCandlesticks
Drag and drop the Indicator to a chart (9).

In the window that appeared when your drag and drop the Indicator to a chart select the Inputs tab (10). Here, you can set any parameters you wish to personalize the TC.AdaptiveCandlesticks. For example, you have the possibility to choose the candlestick events you want to display (see Features and Parameters).



FEATURES AND PARAMETERS

Features	Default settings	Customizable (parameter name)
Bull color mark up	DodgerBlue	✓ (bullColor)
Bear color mark up	OrangeRed	✓ (bearColor)
Event Information on Mouse Roll Over	Font: terminal Font size: 10	✓ (Font) ✓ (FontSize)
Covered Period : allows to exclude patterns during periods of low trading activity	Start Time : 02:00 (HH:MM) End Time: 23:00 (HH:MM)	✓ (Start Time) ✓ (End Time)
List of candlestick events	By default every event is shown Show ... : True	<ul style="list-style-type: none"> ✓ (ShowThreeLineStrikeBullish) ✓ (ShowMorningStar) ✓ (ShowBullishEngulfing) ✓ (ShowPiercing) ✓ (ShowHarami_bullish) ✓ (ShowHammer) ✓ (ShowInvertedHammer) ✓ (ShowWhiteLongBar) ✓ (ShowThreeLineStrikeBearish) ✓ (ShowEveningStar) ✓ (ShowBearishEngulfing) ✓ (ShowDarkCloud) ✓ (ShowHarami_bearish) ✓ (ShowHangingMan) ✓ (ShowShootingStar) ✓ (ShowBlackLongBar)

UPGRADE PROCESS

When a new version of the Indicator is available, a user gets a notification inside their MetaTrader and the loading starts automatically after clicking the OK button.

The previous version is no longer valid.

