

Guide to set up Two Factor Authentication

Terminal: New OTP authentication feature. Use of OTP (one-time password) provides an additional level of security for trading accounts. The user is required to enter a unique one-time password every time to connect to an account.

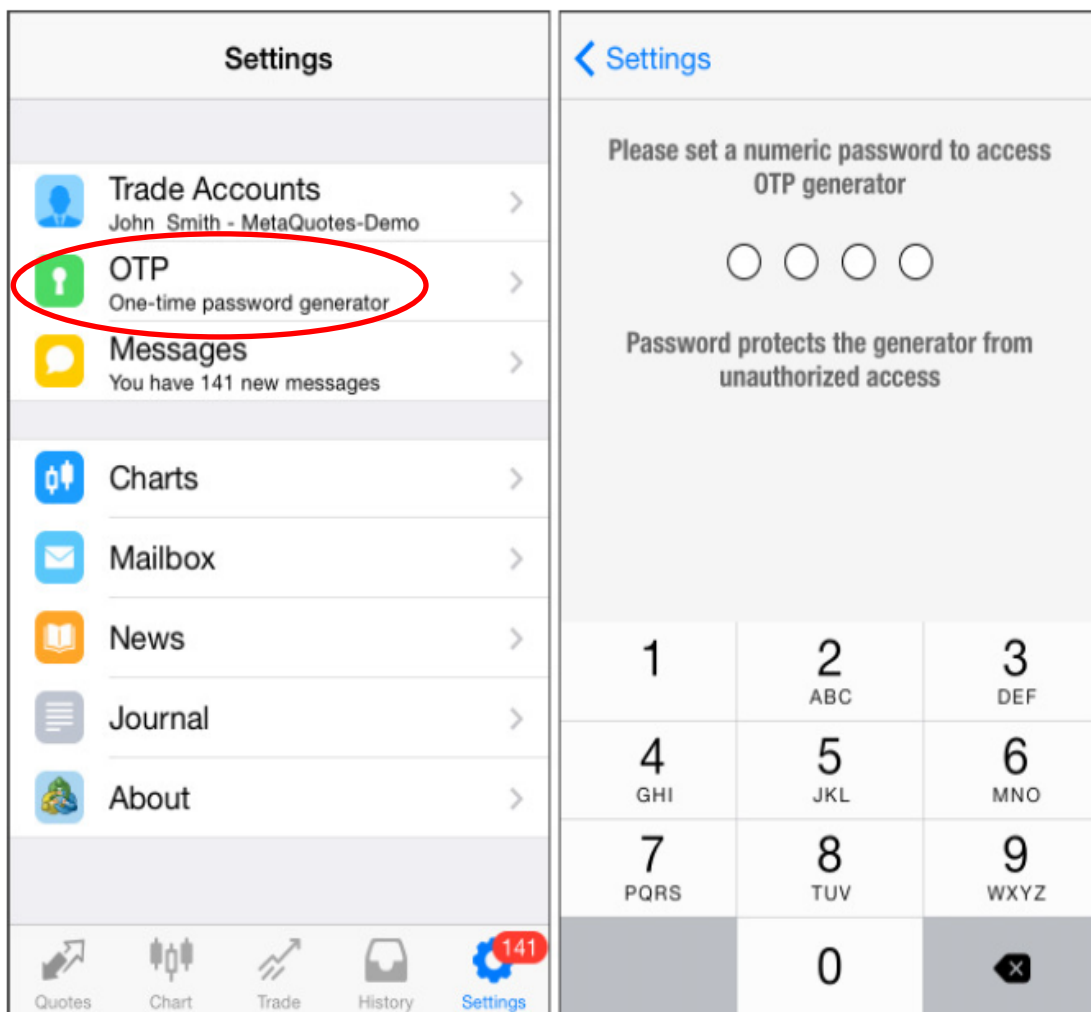
One-time passwords are generated in the MetaTrader 4 mobile terminals for iPhone or Android.

How to enable OTP

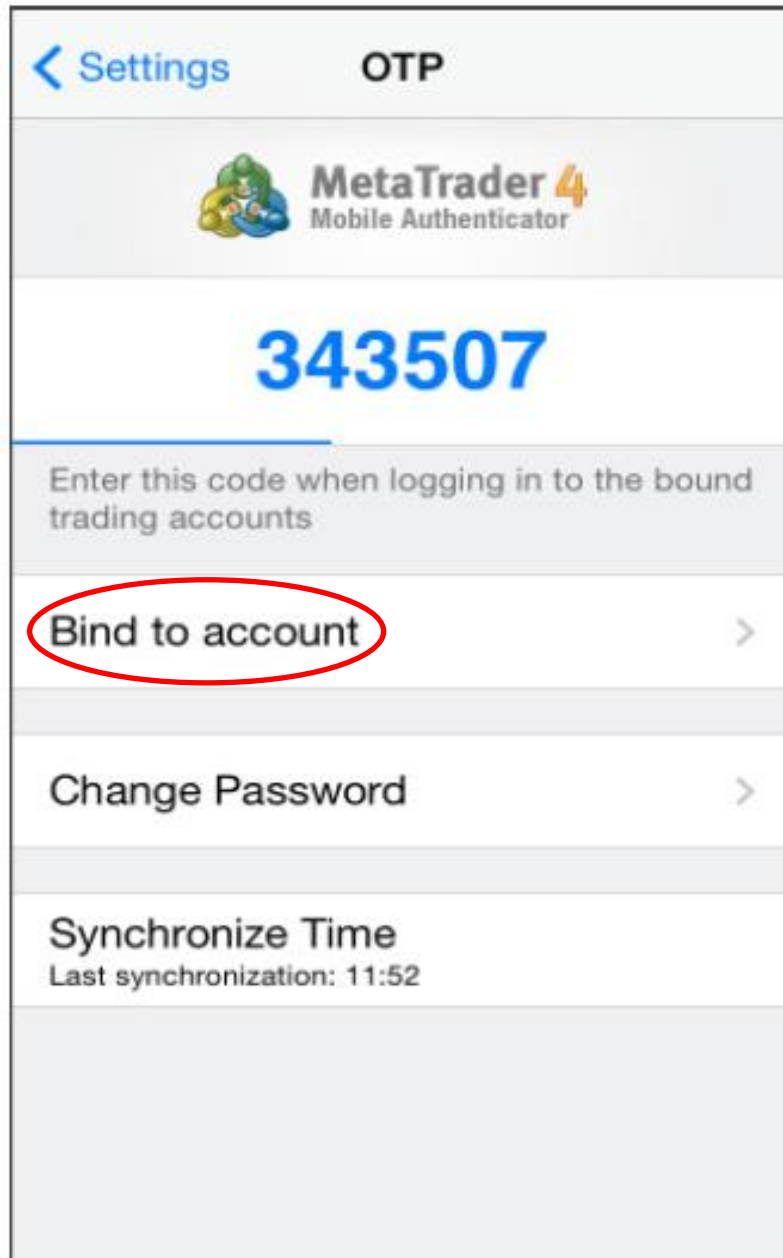
To start using one-time passwords, a trading account must be linked to a password generator, which is actually the MetaTrader 4 Mobile Terminals for iPhone and Android.

The use of the OTP option should be enabled on a trade server. OTP can be used on the MetaQuotes-Demo server.

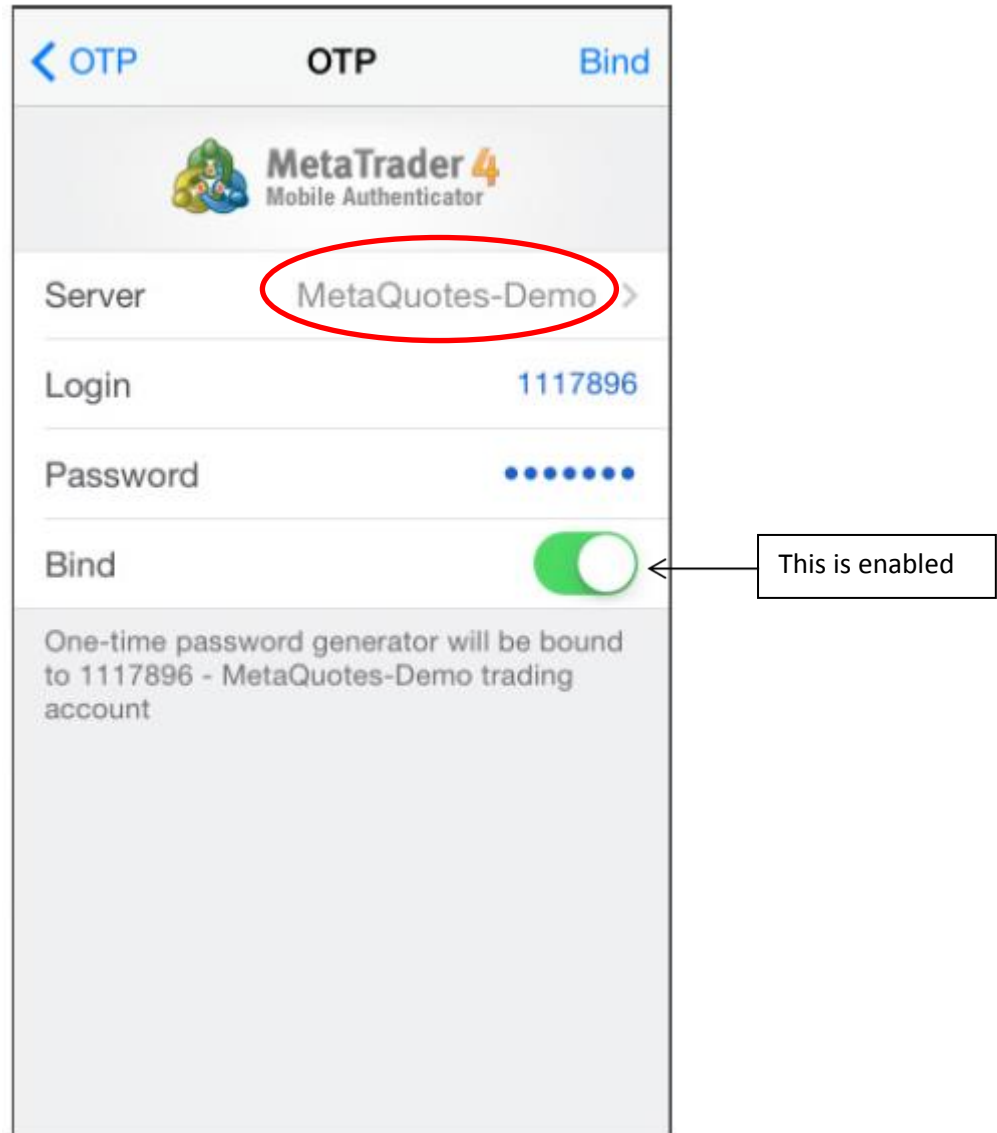
Go to the Settings of the mobile terminal and select OTP. For security reasons, when the section is opened for the first time, a user is requested to set a four-digit password. The password must be entered every time to access the password generator.



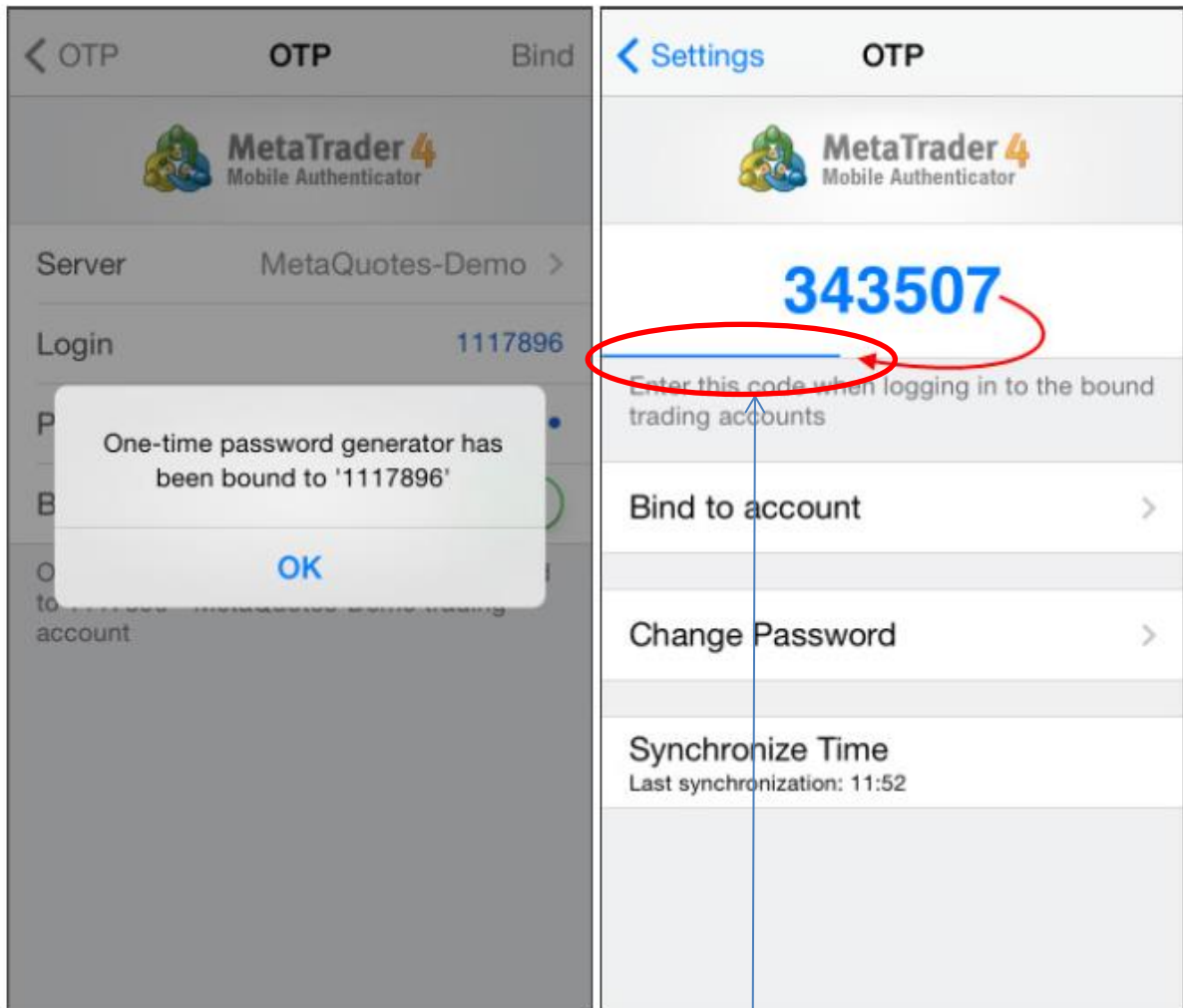
In the next window shown below, select “Bind to account”.



Next, specify the name of the server on which the trading account was opened, the account number and the master password to it. The "Bind" option should be kept enabled. It must be disabled, if the specified account needs to be unbound from the OTP generator to stop using one-time password.



Once the "Bind" button at the top of the window is tapped, a trading account is bound to the generator, and an appropriate message appears.



Likewise, an unlimited number of accounts can be bound to the generator.

The one-time password is displayed at the top of the OTP section. Underneath, a blue bar visualizes the password lifetime. Once the password expires, it is no longer valid, and a new password is generated.

Additional Commands:

- Change Password - change the generator password.
- Synchronize Time - synchronize the time of the mobile device with the reference server.

The accuracy requirements are connected with the fact that the one-time password is linked to the current time interval, and this time should be the same on the client terminal and the server side.

How to Use OTP in the Desktop Terminal

After a trading account is bound to the OTP generator, a one-time password will be additionally requested during every connection to it from the desktop terminal:



END