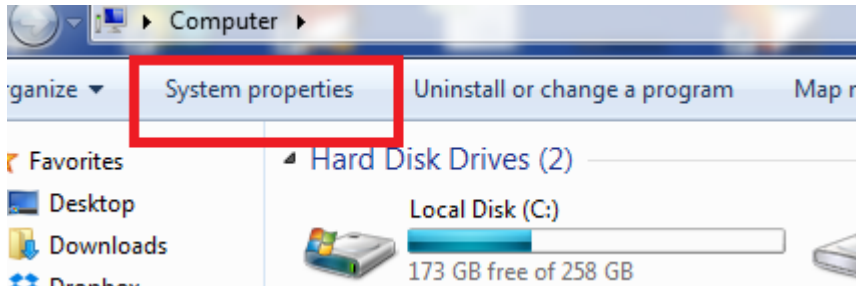


KGI PTA INSTALLATION GUIDE

1. Installation of Java application.
 - 1.1. Checking of Operating System for System Type (32bit or 64bit)
 - 1.2. Go to My Computer



- 1.3. Click on System Properties.



- 1.4. Verify OS is 32 bit or 64 bit

Rating:	System rating is not available
Processor:	Intel(R) Core(TM) i7-3770 CPU @ 3.40GHz 3.40 GHz
Installed memory (RAM):	12.0 GB (11.0 GB usable)
System type:	64-bit Operating System
Pen and Touch:	No Pen or Touch Input is available for this Display

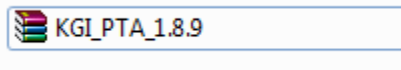
2. Download java based on window OS bit

JAVA 8.40 32bit: <http://kgieworld.sg/images/pdf/downloads/jre-8u40-windows-i586.exe>

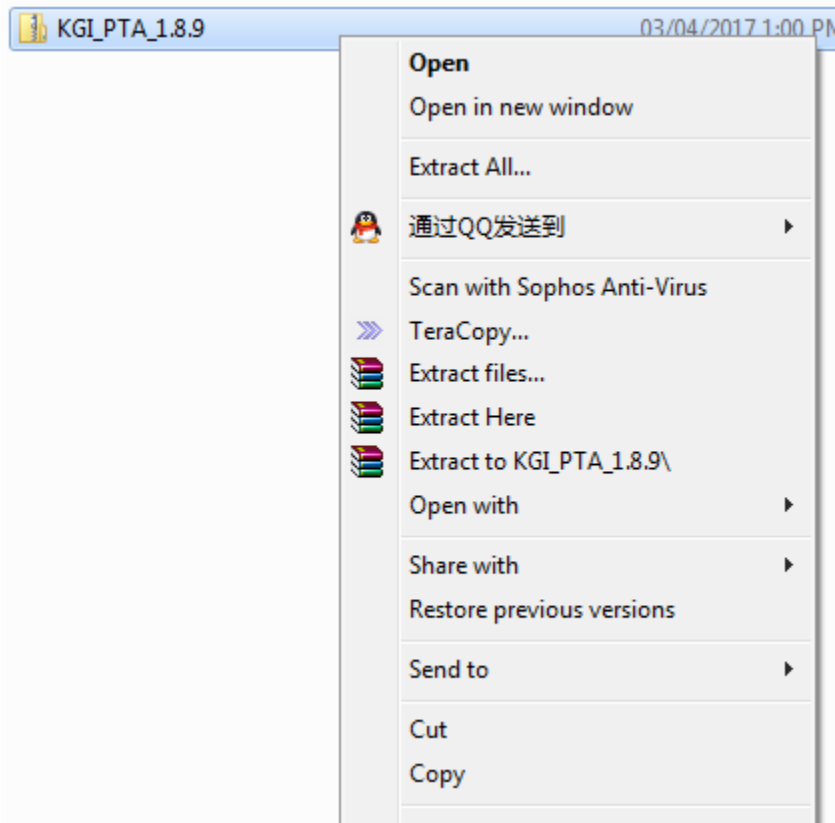
JAVA 8.40 64bit: <http://kgieworld.sg/images/pdf/downloads/jre-8u40-windows-x64.exe>

3. Download the KGI PTA trading application

http://kgieworld.sg/images/pdf/downloads/KGI_PTA_1.8.9.zip



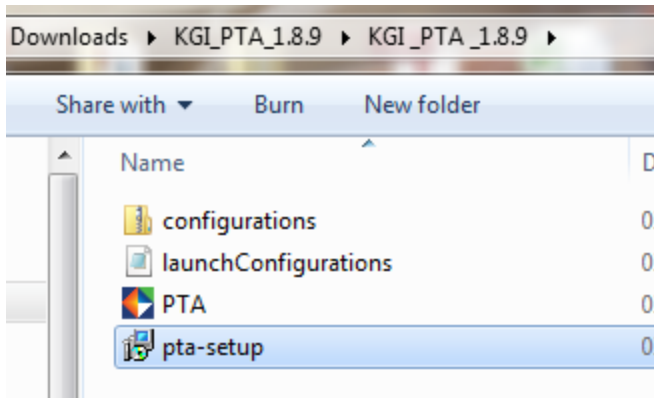
4. Unzip KGI_PTA_1.8.9



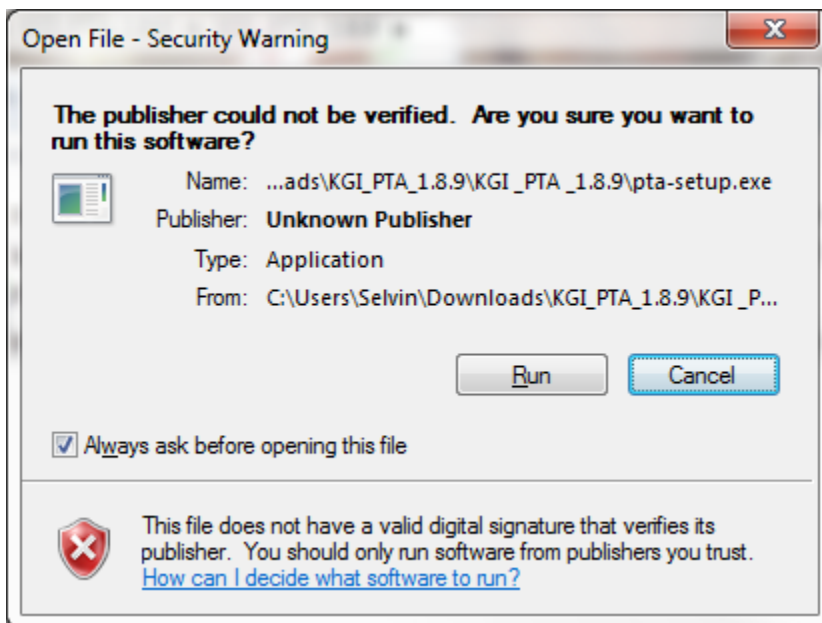
5. DoubleClick



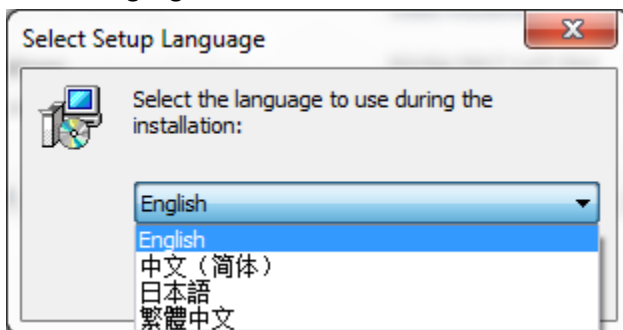
6. Double Click "pta-setup"



7. Click Run



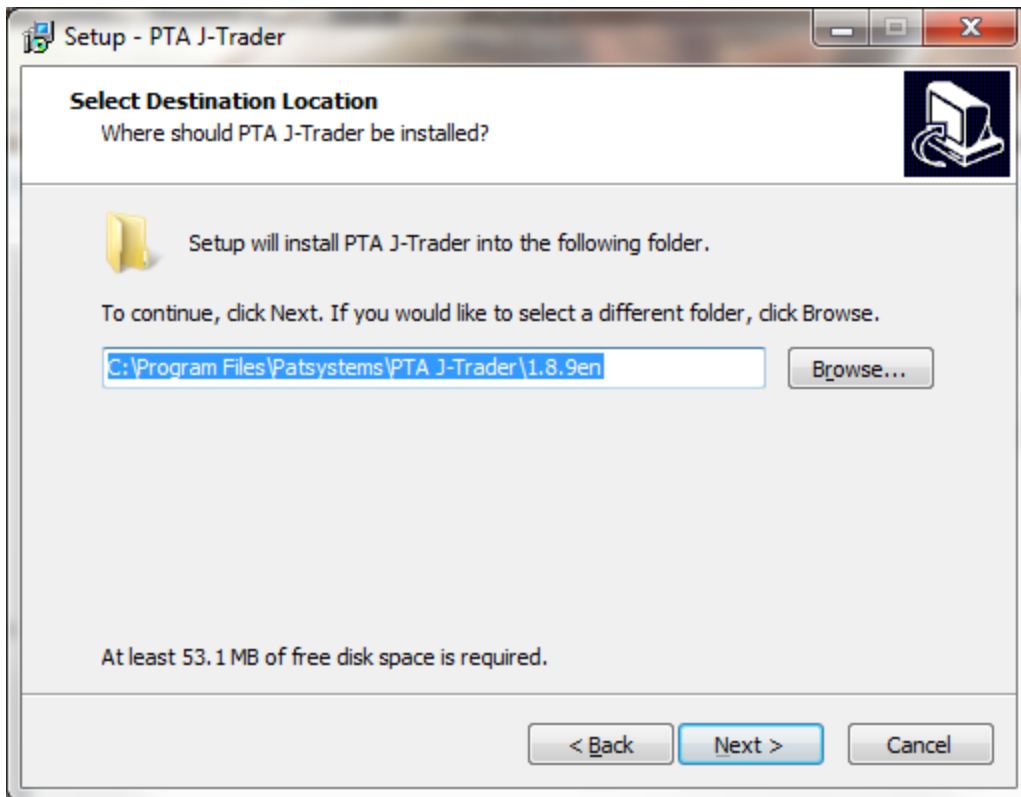
8. Select Language



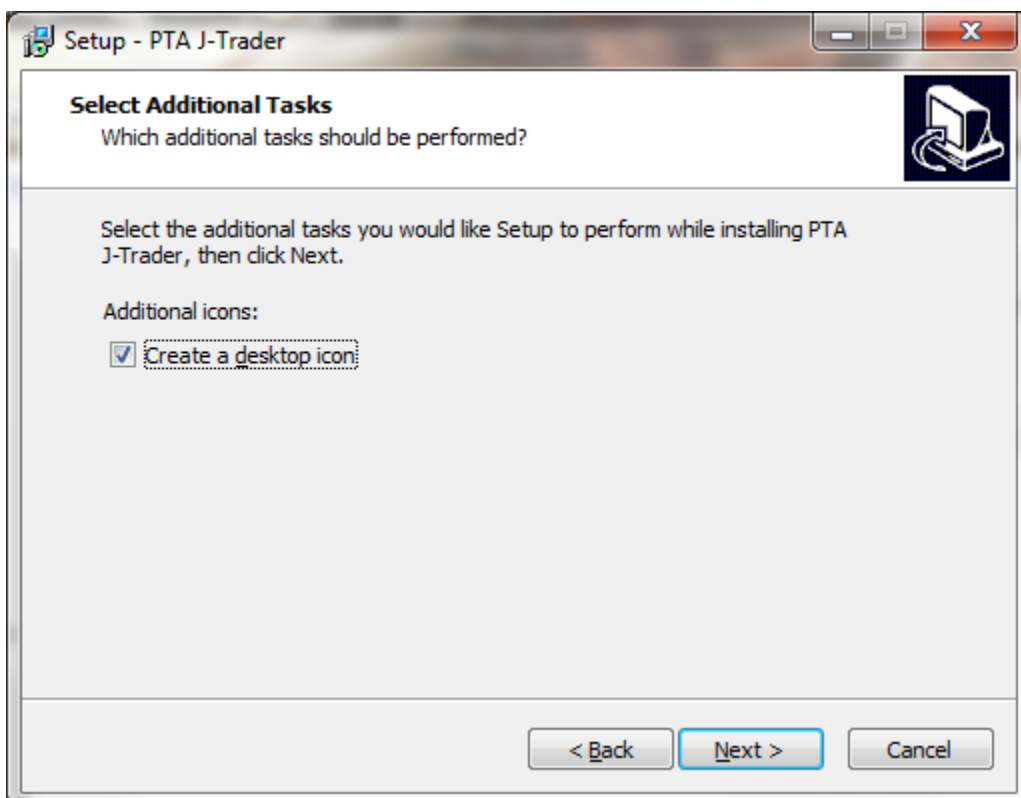
9. Click 'Next'



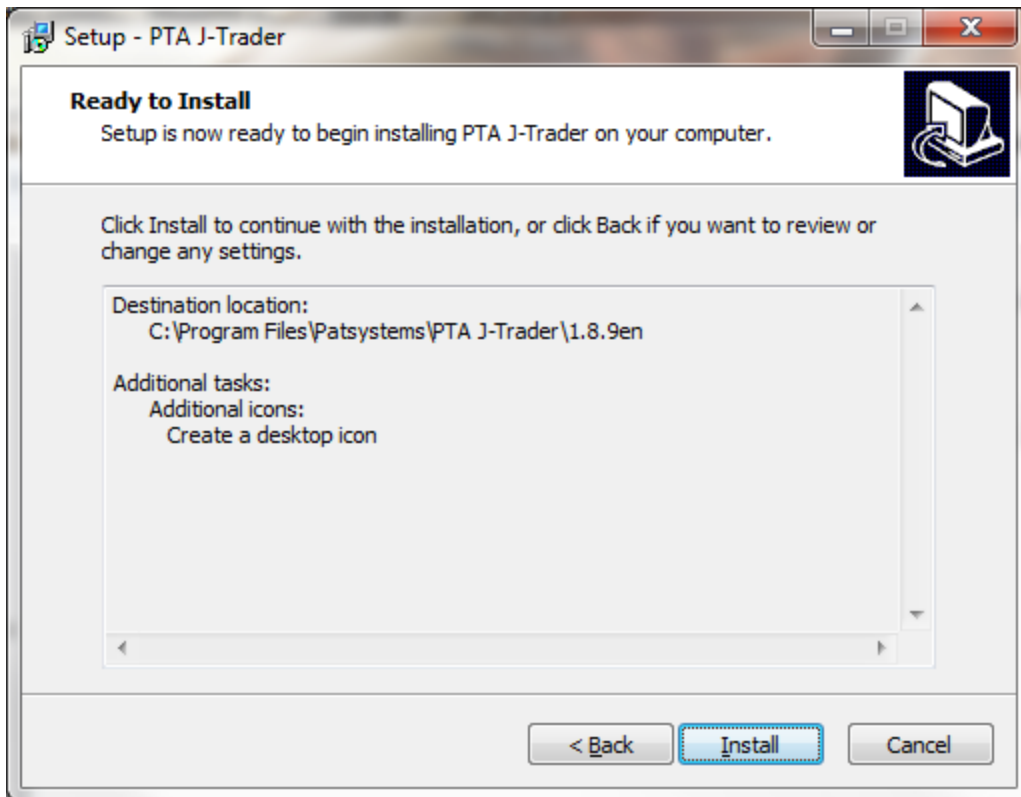
10. Click 'Next'



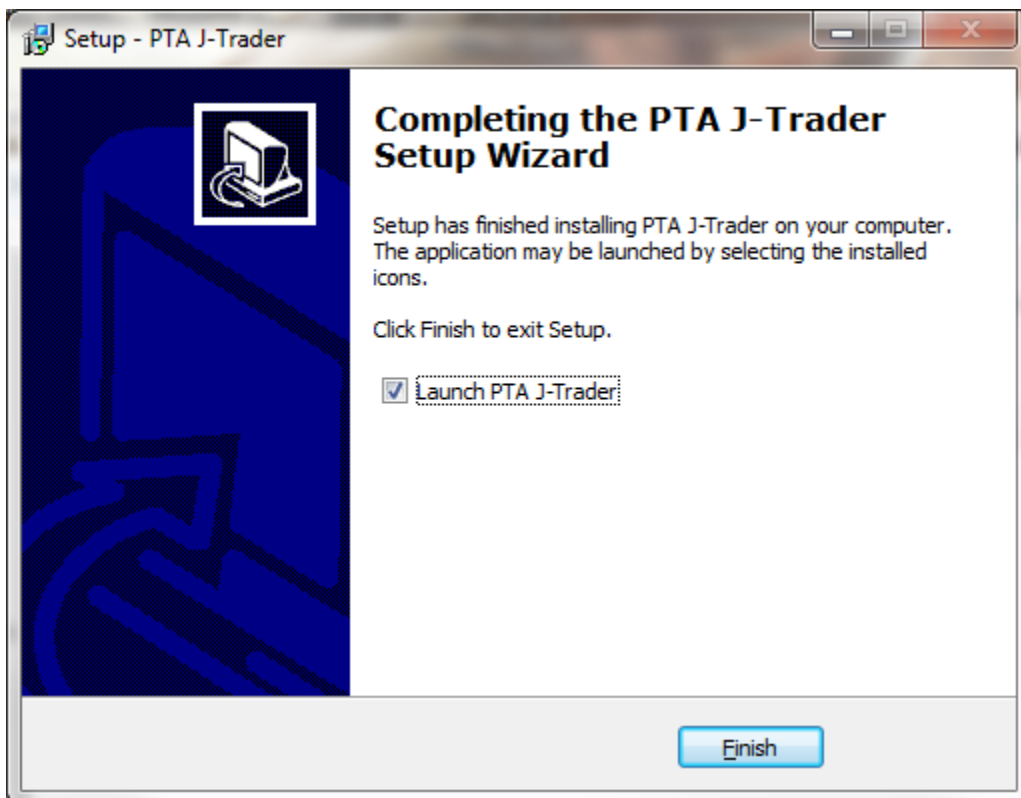
11. Click 'Next'



12. Click 'Install'

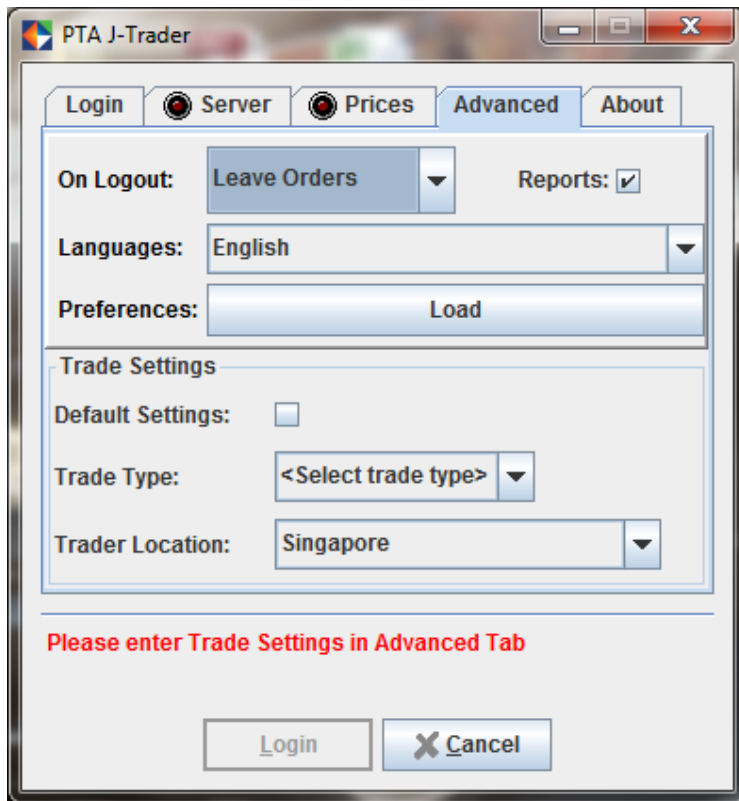


13. Click 'Finish'



14. Go To Advanced Tab

- 14.1. Check Reports
- 14.2. Trade Type → Manual
- 14.3. Select Original Country
- 14.4. Choose Language



15. Go back to login screen and login as per usual

